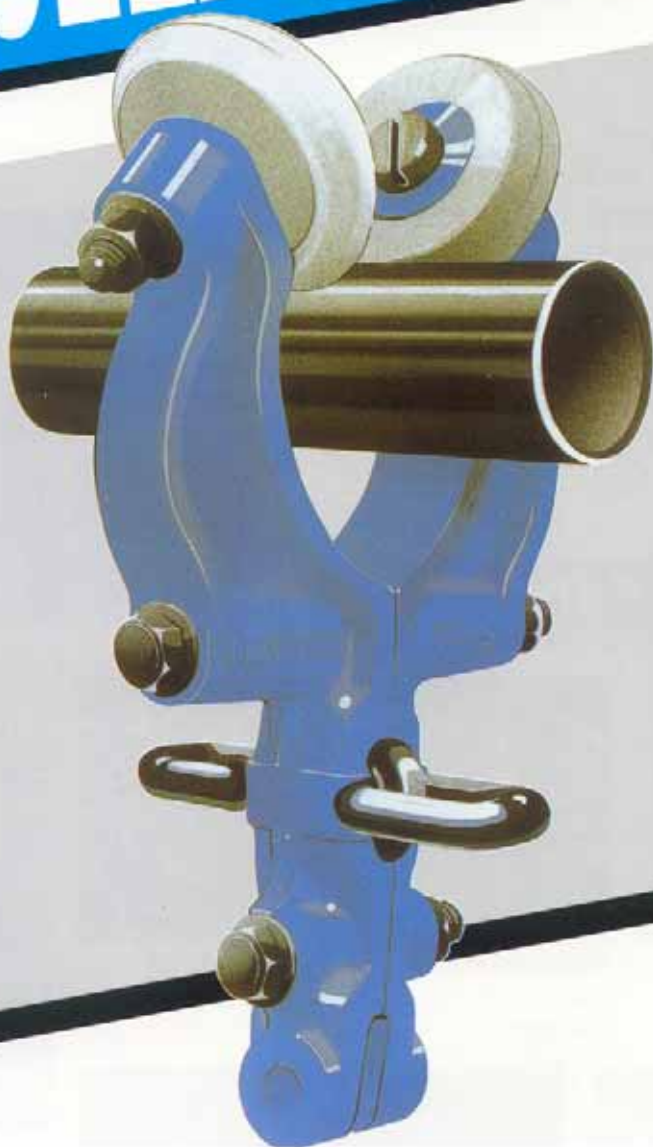


CLEANTRACK[®]



THE HYGIENIC CONVEYOR

S/G/C

STEWART GILL CONVEYORS

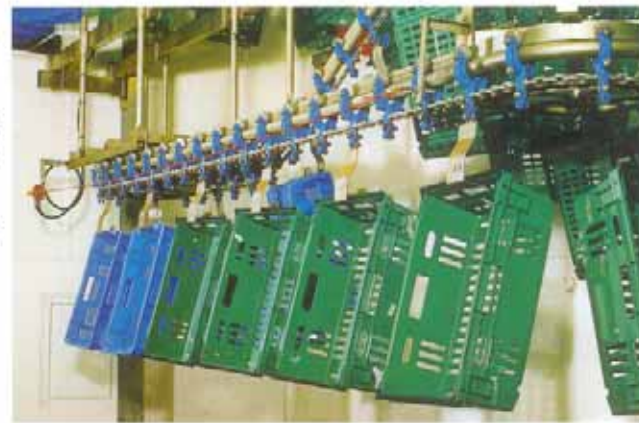
CLEANTRACK®

International Cleantrack®

Cleantrack® is marketed internationally through a network of distributors, chosen for their ability to maintain the high engineering standards which characterise the Stewart Gill organisation

Cleantrack® is the conveyor system developed specifically to meet the corrosive conditions, necessary punishing production schedules and demand for hygienic conveyors in the food processing and related industries.

Designed by Stewart Gill Conveyors Ltd in association with the Design Council, Cleantrack® is based on ultra-hygienic tubular tracking and offers the best that modern technology and materials can provide in terms of cleanliness, long life and low maintenance.



TOTAL MARKET CAPABILITY



SAUSAGES

Cleantrack® - for carcasses, portions, packaging and processed meats.



BOTTLING PLANT

Cleantrack® - fast, smooth, clean, flexible and overhead.



DAIRY PROCESSING

Cleantrack® - fully at home in the dairy.



HORTICULTURE

Cleantrack® - wash it process it, pack it!



CARCASS CURING

Cleantrack® - ready to take a load off your mind.



CONFECTIONERY

Cleantrack® - for flowline production & packaging.





Cleantrack® offers OPTIONS...

- ...in weight reduction, where the plastic trolley option offers 50% weight saving over conventional cast steel
- ...in colour, where a host of non-toxic alternatives permit product or operator coding.
- ...in tracking, where the option of stainless steel for track and chain meets the requirements of the most demanding corrosive environment.
- ...in layout, where the versatility of Cleantrack® permits optimum use of available space.

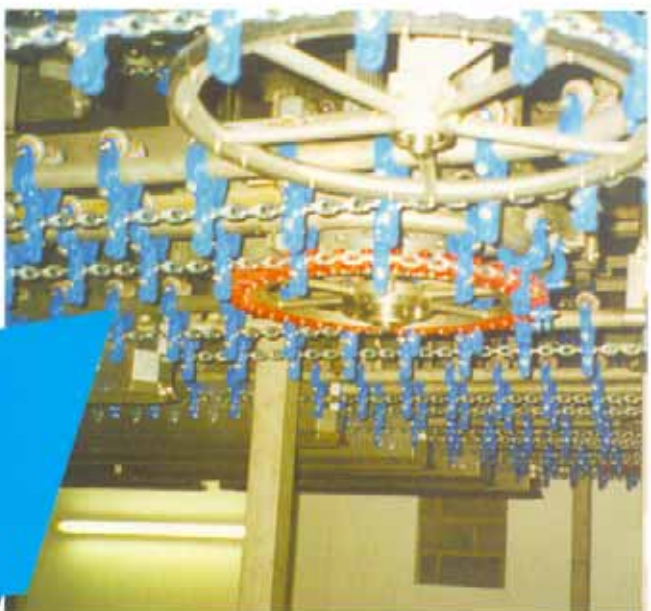
CONVEYOR

It's the detail of Cleantrack® which sets the standard. Fifty years corporate materials handling experience lies behind the design of the thermo-plastic trolley and line components... no metal-to-metal contact, radiussed profiles to prevent dust traps and tubular tracking for easy cleaning and smooth running.

The system is so adaptable... being modular it can be easily extended to meet expansion and changes in demand. Full integration with automation elements, weigh stations and process controls is an everyday activity, as might be expected of the UK's leading food processing conveyor! The versatility extends to track speed which can be instantly adjustable to suit individual production requirements.

When cleaning is necessary Cleantrack® can be simply hosed down and sterilised. The long life components keep maintenance to a minimum.

Long track, short track... fast speed, slow speed... simple layout, complex scheme... Cleantrack® is the modern answer!



SYSTEMS

CLEANTRACK®

Specification

Cleantrack® is supplied in stainless steel

TRACK
Size: 1 1/4" (32mm) nominal diameter tubular track.
Couplings: for joining track lengths and attaching supports. Tubular track 2.1M centres. Including couplings 4.5kg/M.

CHAIN
Size: Calibrated 1" pitch x 8mm diameter
Material: Alloy steel, heat treated and zinc plated.
Breaking Strain: 4,000 kgs.
Max. Chain Pull: 375kgs. Safety Factor 10:1

TROLLEYS
Rollers: 48mm diameter thermoplastic with stainless steel ball bearings.
Material: Thermoplastic Mouldings
Standard Colours: Black, White, Red, Blue, Yellow, Grey
Maximum Load: 25kgs. per trolley
Standard Pitches:
 6" (150mm) Weight per metre 3.7kg.
 8" (200mm) including Chain 3.0kg.
 10" (250mm) 2.7kg.
 12" (300mm) 2.4kg.

VERTICAL BENDS
Standard: 30° or 45° angle supplied with pressure plate on lower segment. 762mm to centre line of track.
Note: - 45° Bend can only be used for 610mm height difference and above.
Weight: Vertical Bend Set 16kgs. maximum

IDLER UNITS
Sizes: Standard Units are 45°, 90° and 180°
Description: Fabricated frame and track bend assembly fitted with stainless steel wheel with plastic wear pads around rim. Running on sealed ball bearings with stainless steel pin.
Weight: Maximum weight of unit 18kgs.

DRIVE UNIT
Description: Fabricated frame supports in line geared motor unit. Stainless Steel drive wheel fitted with plastic teeth and shear pin device. The drive wheel assembly is fitted with guards.
Sizes: 90° or 180° drives standard
 R63 maximum chain pull 148kgs.
 R73 maximum chain pull 254kgs.
 R83 maximum chain pull 507kgs.

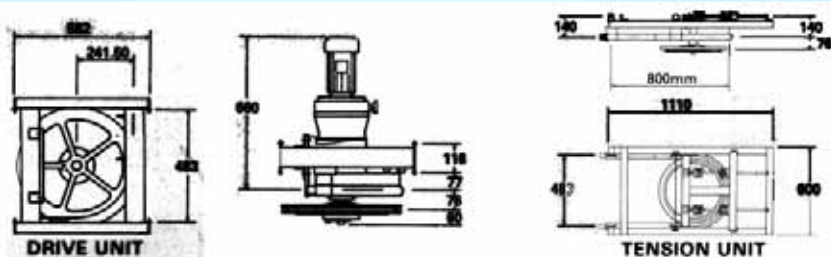
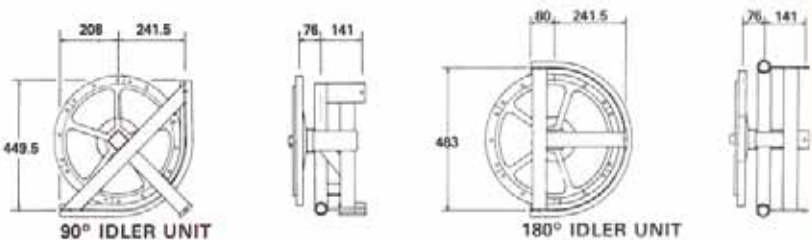
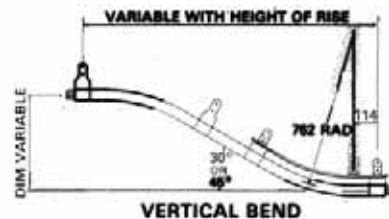
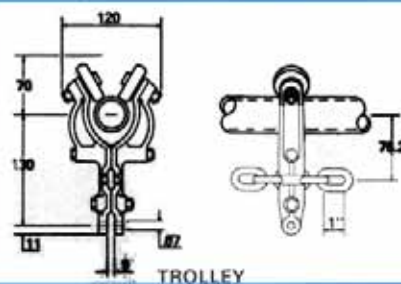
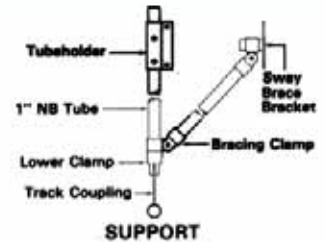
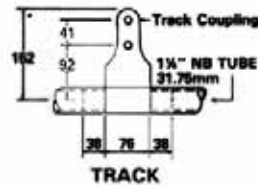
Speeds: Fixed speed or infinitely variable manual 5:1 range. Electronic AC or DC speed control option 20:1 range.
Weights: R63 - 90kgs. approx
 R73 - 116kgs. approx
 R83 - 136kgs. approx

Guide Formula for Chain Pull: Chain and trolley weight + carriers + load x 0.1 Max. Chain Pull: 375kgs.

TENSION UNIT
Description: Fabricated chassis supports, movable unit with tongue and sleeve fitted. Spring loaded.
Weight: Standard unit 49kgs.

GUARDS
 Drive belts, outer mesh and nip guards are supplied for Drive, Tension and Idler Units, etc., where necessary, all manufactured from stainless steel.

All dimensions in millimetres unless stated.



The General Specification may be modified to suit any special requirements.

Metric dimensions given in this brochure are nominal equivalents only. Our policy is one of continuous improvement and we reserve the right to change any specification in this brochure without prior notice.



Stewart Gill Conveyors Ltd

Unit 2 Christy Industrial Estate, Ivy Road, Aldershot, Hampshire. GU12 4TX England

Tel: +44(0) 1252 332221 Fax: +44(0) 1252 334387

www.stewart-gill.co.uk email: info@stewart-gill.co.uk



aesthetically desirable...



commercially viable...

Stewart Gill Conveyors will guarantee up to 6 years (based on operational hours) between replacement intervals - reducing lifetime costs, downtime and maintenance engineering.

There's only one area where Cleantrack® offers no option - in quality - where the highest standards always prevail!!